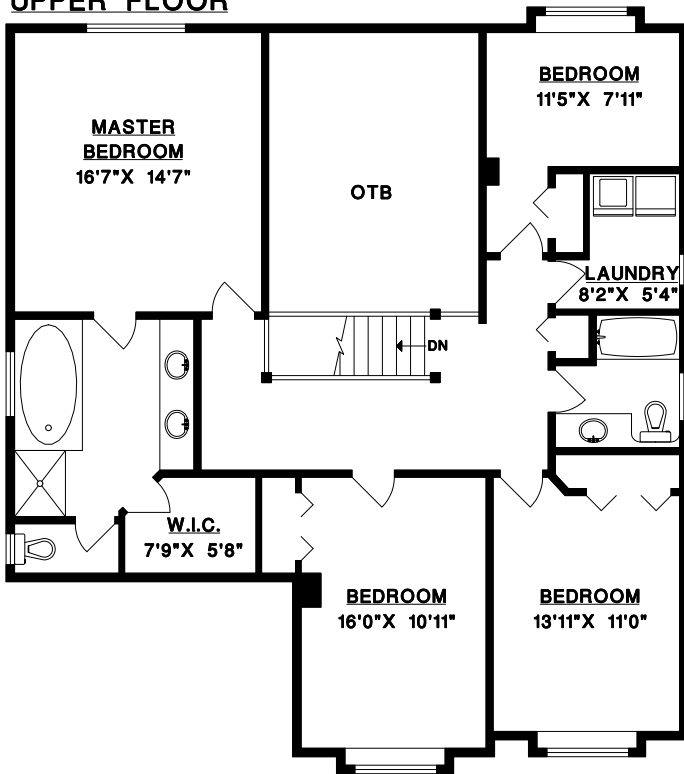


DAVE MARKHAM
604-341-0702

10549 BAKER PL.
MAPLE RIDGE, B.C.

UPPER FLOOR

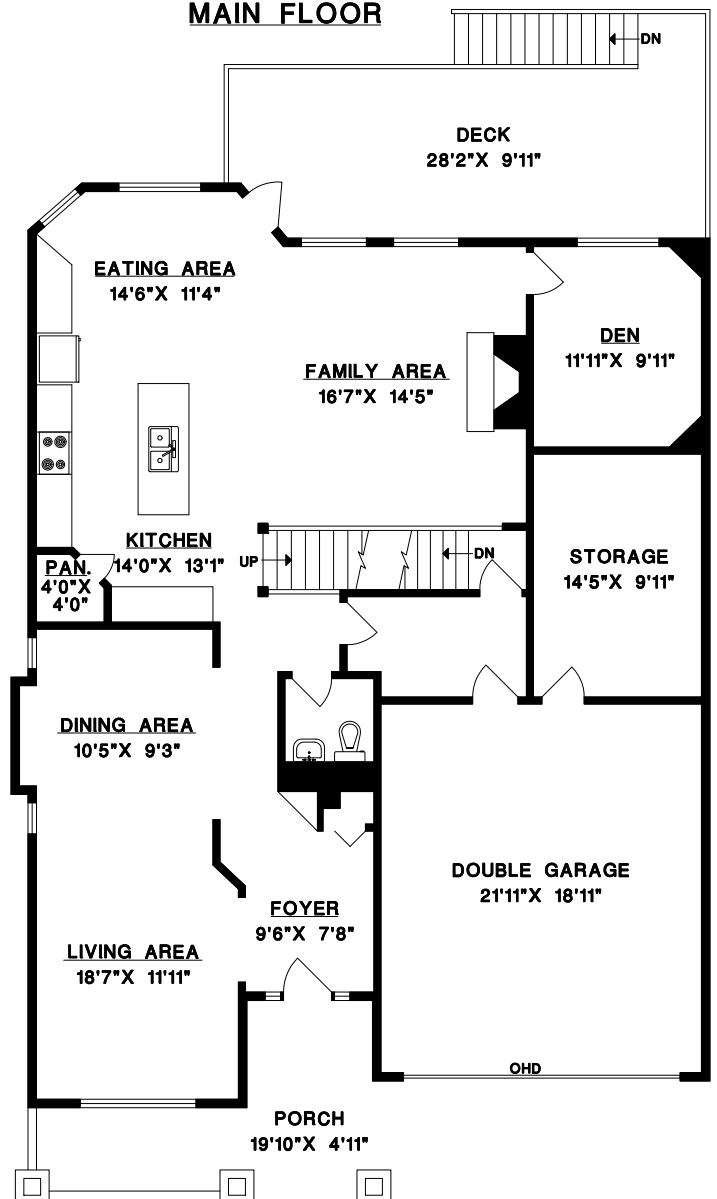


UPPER FLOOR	1344	SQ. FT.
MAIN FLOOR	1447	SQ. FT.
BASEMENT	2029	SQ. FT.
TOTAL	4820	SQ. FT.

GARAGE	434	SQ. FT.
STORAGE	154	SQ. FT.
DECK	288	SQ. FT.
PORCH	140	SQ. FT.

*Includes unfinished areas.

MAIN FLOOR



BASEMENT

